
SOFTWARE METAPAPER

Metis – A Tool to Harmonize and Analyze Multi-Sectoral Data and Linkages at Variable Spatial Scales

Zarrar Khan¹, Thomas Wild^{1,2}, Chris Vernon¹, Andy Miller³, Mohamad Hejazi^{1,2}, Leon Clarke^{1,4}, Fernando Miralles-Wilhelm^{1,2}, Raul Munoz Castillo⁵, Fekadu Moreda⁶, Julia Lacal Bereslawski⁵, Micaela Suriano⁷ and Jose Casado⁷

¹ Joint Global Change Research institute, Pacific Northwest National Laboratory (PNNL), College Park, MD, US

² Earth System Science Interdisciplinary Center (ESSIC), University of Maryland, College Park, MD, US

³ National Peace Corps Association, Washington, DC, US

⁴ Center for Global Sustainability, University of Maryland, College Park, MD, US

⁵ Inter-American Development Bank (IDB), Washington, DC, US

⁶ Research Triangle Institute (RTI), Research Triangle Park, NC, US

⁷ Instituto Nacional del Agua (INA), Buenos Aires, AR

Corresponding author: Zarrar Khan (zarrar.khan@pnnl.gov)

Metis was developed to allow users to analyze regional and sub-regional multi-sector dynamics by providing a platform to harmonize and amalgamate data from different models and stakeholders operating at variable spatial scales. Metis is an open-source R package hosted on GitHub. Metis functions collectively allow users to compare, manipulate, and harmonize multi-sector data at user-specified spatial scales, and to identify and quantify sectoral inter-linkages. Each Metis function can also be used independently to support an array of other research applications, such as spatial analysis and data visualization.

Keywords: Spatial analysis; Sankey; map; nexus; GCAM; multi-scale; input-output; Metis; multi-sector dynamics; energy-water-land

Funding statement: This research was supported by the U.S. Department of Energy, Office of Science, as part of research in Multi-Sector Dynamics, Earth and Environmental System Modeling Program. The Pacific Northwest National Laboratory is operated for DOE by Battelle Memorial Institute under contract DE-AC05-76RL01830.

(1) Overview

Introduction

Important planning and decision making surrounding how to craft policies and allocate scarce financial resources to interventions (e.g., infrastructure) is often conducted at the regional (e.g., large river basin) or sub-regional (e.g., small river basin) scale. This regional planning has commonly been conducted in relative isolation by institutions focused on individual sectors (e.g., water resources management, electricity grid management, etc.) [1–4]. This approach challenges the goal of holistic, cross-sectoral decision making, even when it is understood that a holistic approach would be beneficial.

This traditional planning paradigm is becoming decreasingly effective as a result of rapid interconnection among sectors, which exposes individual sectors to a wide array of forces across different spatiotemporal scales (from sub-regional to global). Understanding and modeling the interactions among energy, water, and land systems

at regional and sub-regional levels presents substantial modeling and social science challenges [5–7].

There does not exist today a modeling platform that can effectively knit sub-regional energy, water, and land systems together at the regional level and connect them to national and global socioeconomic and climatic forces in an internally consistent, computationally efficient, data efficient, and decision-relevant way. Although multi-sectoral tools increasingly include representations of multiple sectors in a single analytical platform [8–13], this approach has not been widely applied at regional and sub-regional scales [14]. At the same time, a different line of research is attempting to link multiple detailed models together at regional levels [15]. However, these linked-model methods are confined to research activities and have not proven tractable in operational decision-making contexts that require greater simplicity and computational efficiency for stakeholder engagement and exploration of uncertainty.

To address the challenges outlined above, the Metis model has been developed jointly by researchers from multiple institutions including the Pacific Northwest National Laboratory (PNNL), the University of Maryland (UMD), the Inter-American Development Bank (IDB), the Research Triangle Institute (RTI) and the Instituto Nacional del Agua (INA). Metis is a data organization and simulation platform that knits together multiple sectors within a single framework to facilitate analysis across sectors, including energy, water, land and socioeconomics, at any user-defined spatial and temporal scale of interest (e.g., provinces or river basins). Metis is designed to assemble, harmonize, and visualize data from different sectors in a consistent manner, and use that information to infer relationships between the sectors (e.g., how much water is used in the energy sector). These relationships, defined through an input-output matrix [16], can then be used to explore the cross-sector implications (i.e., nexus impacts) of alternative future policies or investments, such as hydropower or irrigation expansion. Similarly to multi-sectoral models, Metis represents all sectors with comparable detail and resolution, rather than focusing attention on representing particular sectors in more detail.

Data scarcity can be a significant constraint in regional and sub-regional planning studies seeking to evaluate multi-sector dynamics. Metis seeks to overcome this barrier by providing users with default data sets describing energy, water, and land supplies and demands for their specific region of interest. As shown on the left-hand side of **Figure 1**, the default data is built from outputs of the open-source Global Change Assessment Model (GCAM) and the ecosystem of modelling tools designed specifically to interact with GCAM [17]. GCAM is used to capture long-term regional and global energy-water-land dynamics in response to drivers such as socioeconomic change, technological change, climatic change, and policy decisions. The broader GCAM ecosystem produces a globally consistent, downscaled set of gridded energy, water, and

land data that Metis uses by default. The downscaling tools enable sub-regional planning issues to be linked to broader national and international dynamics. Metis aggregates the downscaled/gridded data to any spatial boundary, thus offering users an initial assessment of the energy, water, and land supplies and demands in their regions of interest. This initial assessment can then serve as the starting point that is refined over time as and when local data becomes available. Users can overwrite Metis' default data sets at any time with these local data sets.

Figure 1 shows that the motivation behind developing Metis is to bridge the gap between sectoral models working at different spatial and temporal resolutions. Thus, as shown on the right-hand side of **Figure 1**, users can supplement global data sets with available outputs from models that capture specific sub-regional and sectoral details at finer resolution (e.g., water management or electricity planning models). While limited in scope to specific sectors, finer-scale models can nonetheless provide valuable input data to Metis. Metis integrates across tools by sharing data in standardized formats.

After aggregating data to relevant spatial and temporal scales, Metis identifies the relationships among sectors using linear input/output methods to establish intensity matrices. The intensity matrices represent the inter-sectoral links throughout the system. These linkages are reflected through intensity coefficients, which describes the commodity flows from one sector (e.g., electricity) that are required to produce a unit of output in another sector (e.g., water). These coefficients, which serve as the basis for calibration of the model, are then used to investigate impacts of changes in one sector on others. The sectoral interlinkages that exist in any given Metis application will depend upon the data used to populate the model. Examples include water demands for power plant cooling and hydropower; energy demands for water purification, transfers, and distribution; and both energy and water demands related to agriculture production and land-use change.

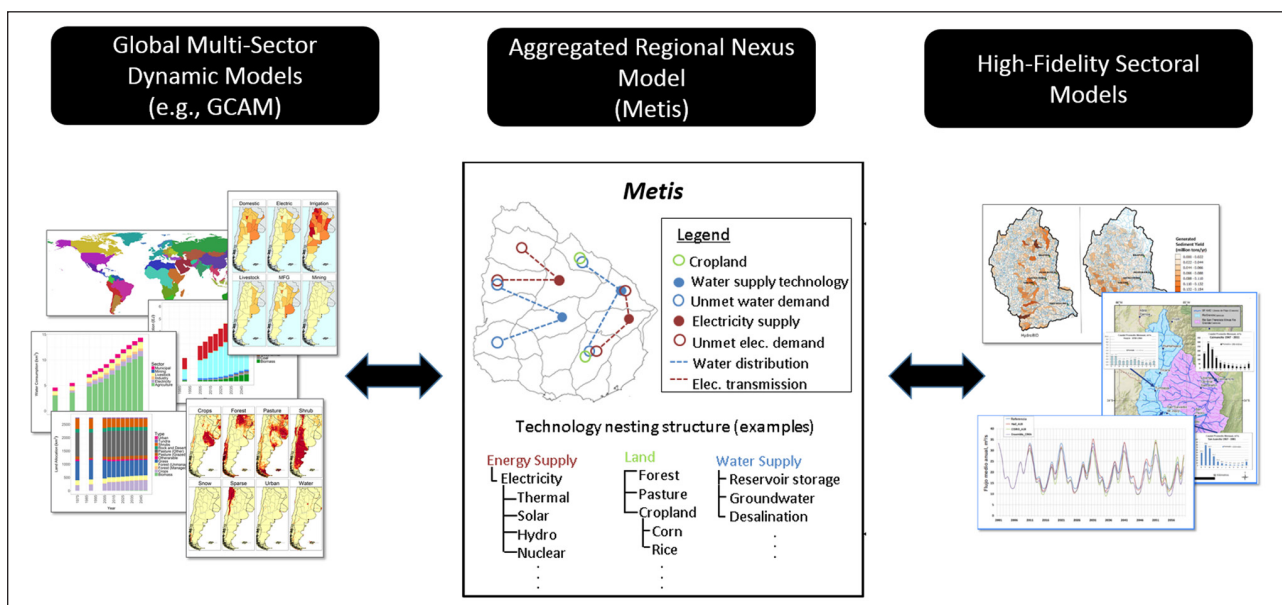


Figure 1: Conceptual figure showing an overview of Metis as a tool to harmonize across models with variable resolutions.

Implementation and architecture

Metis is hosted on GitHub at <https://github.com/JGCRI/metis>, where users can find the latest version of the software and user documentation. Model details and features described in this publication pertain to the latest version of the model as of the date of this publication.

Metis is designed to be accessible to a range of stakeholders with varying expertise and goals related to multi-sector, multi-scale analyses. Various Metis functions can be used independently for different purposes, including visualization, charting, spatial aggregation, mapping, and inter-sectoral dynamics. **Figure 2** summarizes key Metis modules and functions. Briefly, existing model capabilities include:

1. Input/Output (IO) Analysis: Functions to build IO inter-sectoral intensity tables and Sankey diagrams. (functions: `metis.io.R`)
2. Charts: Various functions to produce charts to compare outputs across regions and scenarios (functions: `metis.chart.R`, `metis.chartsProcess.R`)
3. Maps: Various functions to visualize spatial boundaries and data as rasters and polygons (functions: `metis.boundaries.R`, `metis.map.R`, `metis.mapsProcess.R`)
4. Spatial Aggregation: Functions to aggregate gridded data to different spatial boundaries. (functions: `metis.grid2poly.R`, `metis.gridByPoly.R`)
5. Data preparation: Functions to prepare data from other modules into the appropriate format to be used by Metis. This includes data from GCAM and other models in the GCAM ecosystem which down-scale the data into global grids. (functions: `metis.readgcam.R`, `metis.prepGrid.R`)

The following sub-sections walk users through the installation and example implementations of the key Metis functions shown in **Figure 2**.

Installation

1. Clone or download the Metis repository from GitHub:


```
git clone https://github.com/JGCRI/metis
```
2. Download and install:
 - a. R (<https://www.r-project.org/>)
 - b. R studio (<https://www.rstudio.com/>)
 - c. (For Windows) Rtools (<https://cran.rstudio.com/bin/windows/Rtools/>)
 - d. Image Magick (<https://imagemagick.org/script/download.php>)
3. Open the `metis.Rproj` file.
4. Open the `metis.master.R` file which contains code to help install and run the model. Please review the instructions to setup additional packages which may be needed for different operating systems kept up-to-date on the GitHub page as well as within the `metis.master.R` file. These include dependencies such as `rgdal`, `devtools`, `rgcam`, and `imageMagick`.

Key functionality

Table 1 summarizes key functions in Metis. Each of these functions can be found in the directory `./metis/R`. The main functions are then described with examples subsequently.

metis.io.R

`metis.io.R` is the Metis function used to analyze inter-sectoral intensities. `metis.io.R` uses an input/output methodology [16] to calculate linear intensity coefficient matrices. The function accepts a table of values giving flows of commodities labelled “supplySector” to any number of other sectors including the “supplySector” categories. The function then finds inter-sectoral links by analyzing the flows from given supply sectors to other supply sector categories within the region. Outputs of the function include tables, bubble charts and Sankey diagrams showing the intensity matrices and inter-sectoral

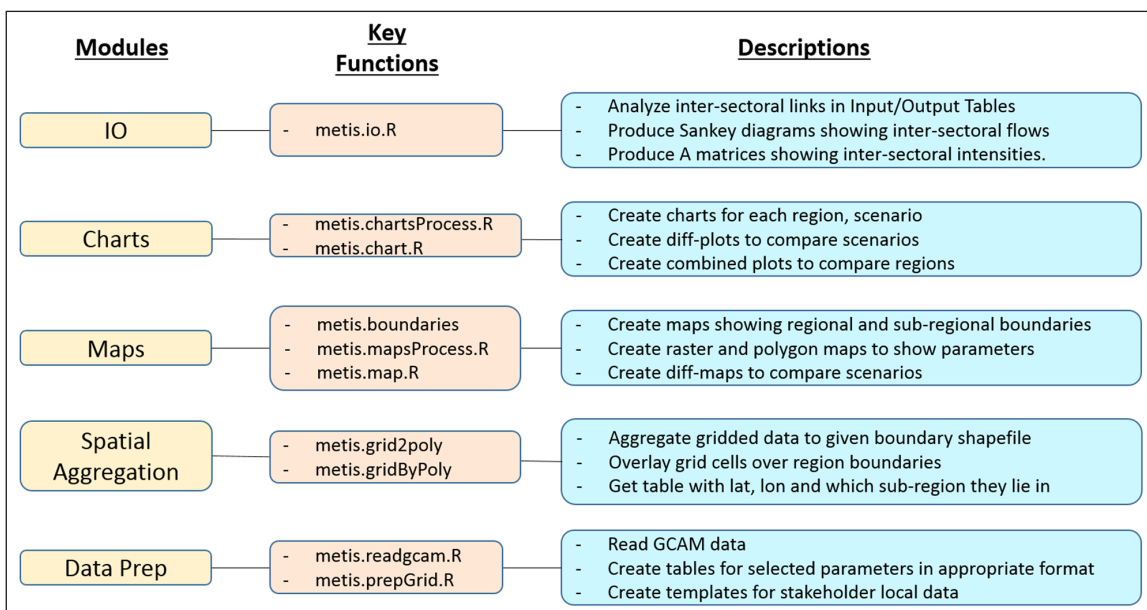


Figure 2: Key Metis modules and functions.

Table 1: Key Metis functions.

Function	Description
<code>metis.io.R</code>	<code>metis.io.R</code> analyzes inter-sectoral dependencies using an input tables representing demands and supplies of different commodities and/or coefficient matrices representing inter-sectoral intensities. If not provided the function calculates linear inter-sectoral dependencies in the form of a coefficient matrix. Outputs include visualization of the inter-sectoral flows as Sankey diagrams as well as bubble plots representing flows and coefficient values.
<code>metis.readgcam.R</code>	This function is designed to interact specifically with GCAM outputs. The function processes GCAM outputs into <code>.csv</code> files by GCAM region, which can then be used as inputs to <code>metis.chartsProcess.R</code>
<code>metis.chart.R</code>	A charting function that allows quick and easy access to features like facets, labels and colors. The function is based on <code>ggplot</code> and returns a <code>ggplot</code> chart.
<code>metis.chartsProcess.R</code>	A charting function used to compare GCAM time series outputs across scenarios and regions. The function also creates diff plots with percentage and absolute differences from a given reference scenario.
<code>metis.map.R</code>	A mapping function used to plot raster and polygon data. The function uses the <code>tmap</code> package and returns a <code>tmap</code> object. Several maps can be combined by overlaying and underlaying using this function. Options allow for different color palettes, labels, and text-size. Visualization features include legend breaks that are freescale, kmeans, or equally divided to highlight different kinds of data.
<code>metis.boundaries.R</code>	Metis mapping function to plot shape file boundaries and surrounding regions for quick visualization of any region of interest.
<code>metis.grid2poly.R</code>	Function used to crop and aggregate gridded data by a given polygon shape file. If no grid is provided, the function can still be used to produce regional and subregional maps.
<code>metis.mapsProcess.R</code>	Metis mapping function used to compare across scenarios. The function produces diff maps with percentage and absolute differences from a given reference scenario.
<code>metis.prepGrid.R</code>	This function is designed to be used with specific open-source downscaling models (Xanthos [18], Demeter [19], and Tethys [20]) that downscale GCAM data to the grid level. The function takes outputs from these various models and processes them into the format required for providing input to the <code>metis.mapsProcess.R</code> function.
<code>metis.assumptions.R</code>	Contains all conversions and assumptions used in the model.
<code>metis.colors.R</code>	Collection of Metis color palettes. A list of palettes can be viewed in the function help file (<code>?metis.colors</code>). To view a particular palette: <code>metis.colors("pal_hot")</code> .
<code>metis.networkOrder.R</code>	Determines the order in which to route water flows through the network of sub-regions, given a user-specified network connectivity matrix.
<code>metis.waterBalance.R</code>	Determines the natural flows from upstream sub-regions to downstream sub-regions via routing.

links as shown in **Figure 3**. In **Figure 3b** the intensity matrix shows the intensity of inter-related sectors such as the “ag” sector which requires 0.97 units of “water” and 0.48 units of “elec” to produce 1 unit.

metis.readgcam.R

A key feature of metis is the ability to interact with different models. The core Metis model comes with the ability to connect directly with GCAM. This connection is made through the `metis.readgcam.R` function.

The model comes with an example GCAM database `.proj` file called `Example_dataProj.proj`, which lies in the directory `./metis/dataFiles/gcam/`. GCAM produces output in the form of a database. The database contains outputs from various scenario runs. `metis.readgcam.R` uses the R package `rgcam` to establish a connection with the GCAM database and retrieves data based on “queries” provided in an `.xml` file. An example query file called `metisQueries.xml` is also provided in the same folder. Often scenario names in the model can be long and not appropriate for final

figures. This function allows you to rename the scenarios as they are read in. Once the data has been extracted from a GCAM database it is saved in a `.proj` file. Reading data from the GCAM database can take a considerable amount of time depending on the number of scenarios it contains. The `metis.readgcam.R` function gives the option of directly providing a `.proj` file, which can be loaded directly, or using the `.proj` file from a previous run by setting the parameter `reReadData` to `FALSE`.

The `metis.master.R` file provides a step-by-step guide to connecting with GCAM model outputs. GCAM being a global multi-sectoral human-earth system model provides users with a large database of outputs which can be difficult to manipulate. The connection with Metis will allow users to easily sub-set relevant parameters of interest and compare across scenarios and time periods as well as visualize these results spatially. This functionality will assist planners and stakeholders to easily visualize and assess the regional and sub-regional implications of various policies, climate change, and different socio-economic and technological pathways on multiple resource sectors such as water, energy, and land.

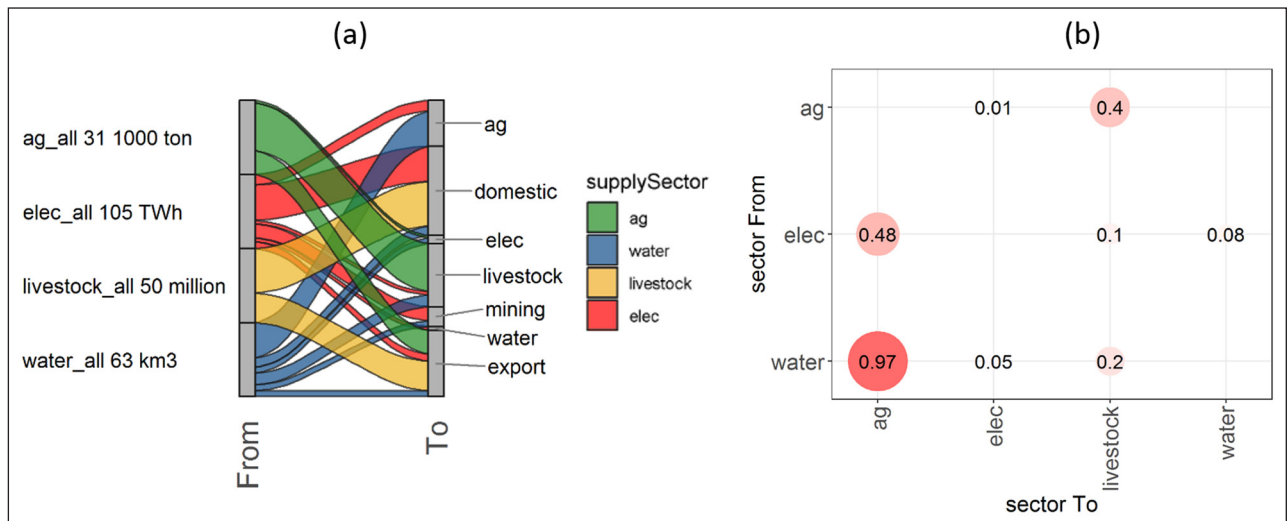


Figure 3: metis.io.R example outputs. **(a)** Sankey diagram; **(b)** Inter-sectoral intensity matrix showing how many units of other sectors are needed to produce one unit of the sector in concern (e.g. To produce 1 unit of “ag”, 0.97 units of “water” and 0.48 units of “elec” are needed).

metis.chart.R

metis.chart.R is the Metis charting software used in metis.chartsProcess.R. It allows users to create line, bar, bubble, and Sankey charts. The default settings maintain a consistent appearance across the metis products. metis.master.R provides examples to explore the metis.chart.R capabilities.

metis.chartsProcess.R

After running metis.chartsProcess.R several charts will be produced. These are saved in separate directories for each region, and within each directory Metis creates a sub-directory for each scenario as well as sub-directories for cross-scenario comparisons. In addition to the individual regional directories a directory called compareRegions contains inter-regional comparisons for each scenario as well as a cross-region/cross-scenario comparison. Tables with the data used for each figure are also provided in corresponding folders. metis.master.R provides examples for using the example data from the default GCAM database to show how different parameters across scenarios and regions can be compared using metis.chartsProcess.R. Some example figures are show in Figure 4.

metis.map.R

metis.map.R is the metis charting software used in metis.mapsProcess.R and boundaries. It allows users to map outputs to shapefile polygons and raster files. The default settings maintain a consistent appearance across the metis products. metis.master.R provides examples to explore the metis.map.R capabilities.

metis.boundaries.R

metis.boundaries.R is used to create maps showing where a sub-region of interest lies in the greater region. For this option a boundary region should be defined. Natural Earth [21] geospatial files come with Metis and allow users to view country and state boundaries for the globe. Once metis.boundaries has been run a directory

for “Maps” is created. The Maps directory will contain a “Boundary” directory which contains the boundary files defining each region and subregion. The function also shows how different grid cells sizes compare with the selected regions. This is useful to understand if the desired regional resolution is too fine for a particular grid size. Figure 5 shows example outputs of the function used to visualize different boundaries and how they overlap or intersect with other shapes and regions.

metis.grid2poly.R

metis.grid2poly.R is used to aggregate gridded data to user-specified sub-regional spatial scales. metis.grid2poly.R accepts gridded data in the form of a table with latitude and longitude coordinates and a value for each point. Depending on the type of gridded data (volume or depth) the aggregation is done based on the part of the polygon that intersects with the grid cells, as shown in Figure 6. “Volume” here is defined as data such as volume of runoff or number of people in a grid cell. For this type of data the aggregate value for the polygon can be calculated as the sum of the values in each grid cell weighted by the percentage of area of that grid cell that overlaps with the polygon as shown in Method 1 in Figure 6. “Depth” on the other hand is data such as mm of water or water scarcity calculated as ratio. For this type of data the mean of the data weighted by the part of the area of the polygon within each grid cell is used to calculate the aggregate value for the polygon as shown in Method 2 Figure 6. Outputs from metis.grid2poly.R include tables with the original data by grid cell as well as new tables with data aggregated by the polygons from the shapefile provided.

metis.mapsProcess.R

metis.mapsProcess.R takes provided gridded and/or polygon data (which can be prepared using the suite of Metis functions defined previously) to produce maps as shown in the example in Figure 7. In addition, difference maps showing the absolute and percentage difference between a selected reference scenario and

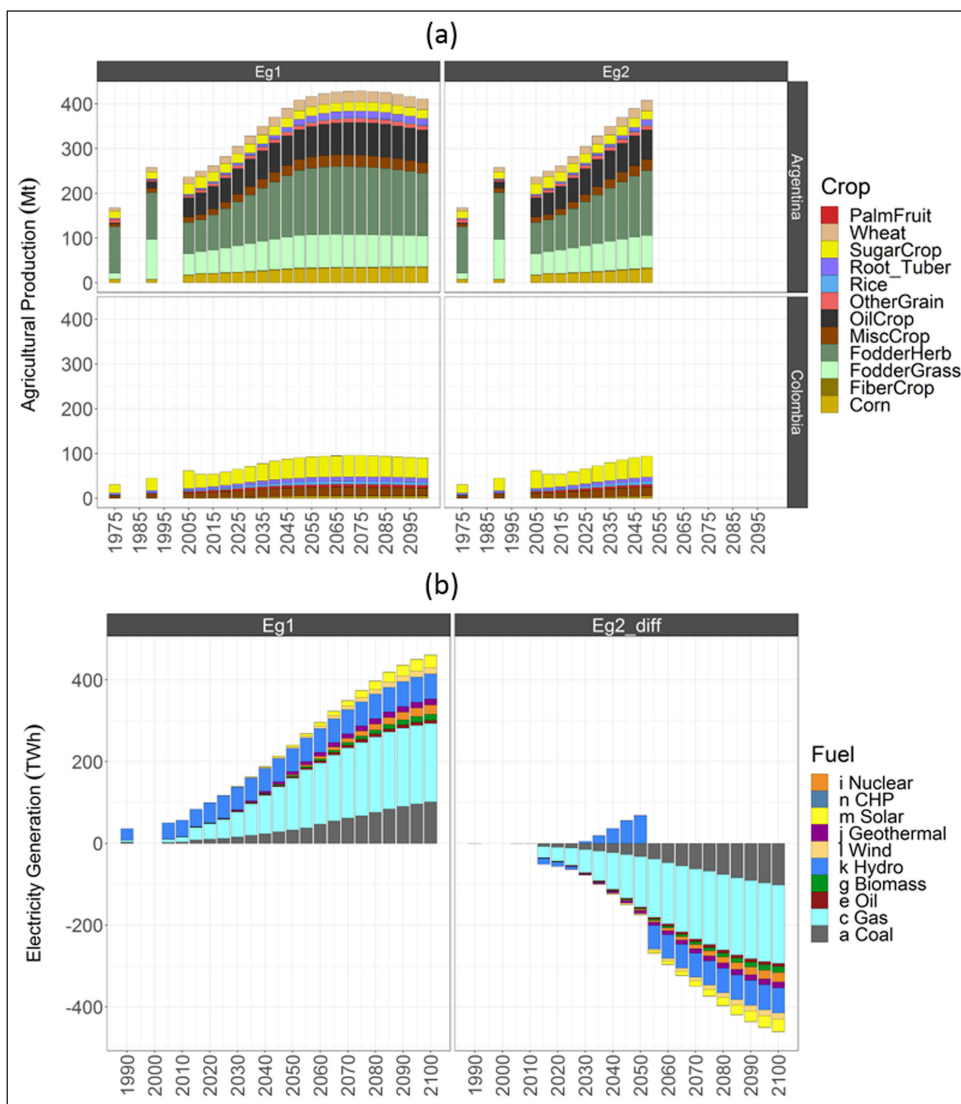


Figure 4: metis.chartsProcess.R example outputs. **(a)** Comparison across regions and scenarios for agricultural outputs in Argentina and Colombia for two hypothetical scenarios Eg1 and Eg2. **(b)** Diff-plot showing a reference scenario (Eg1) on the left and the difference between the reference and second scenario (Eg2) for each year. Eg2 was only run through 2050, so the difference after 2050 is equal to the negative value of Eg1.

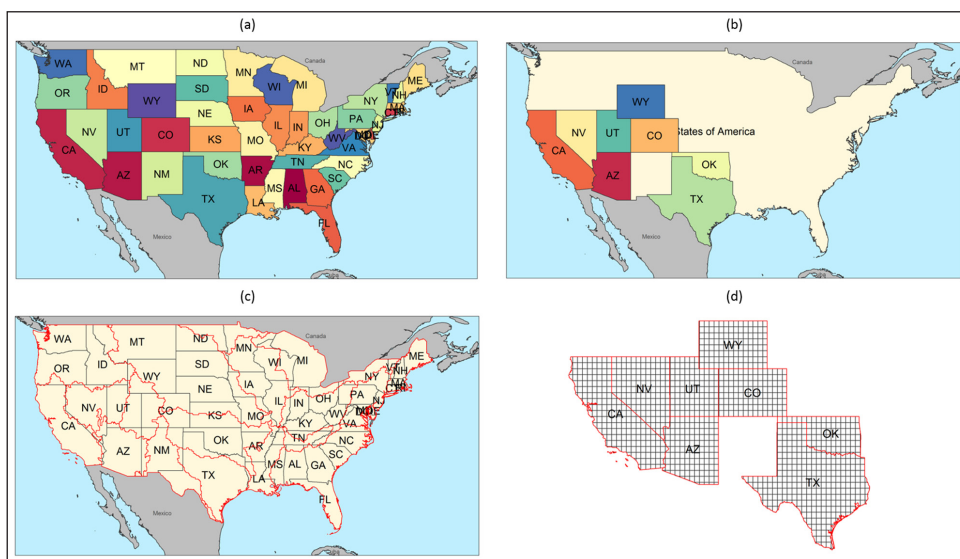


Figure 5: metis.boundaries.R example outputs produced using the example script metis.master.R. **(a)** US states plotted on broader continent. **(b)** Sub-set of chosen states. **(c)** US states overlapped with large river basin boundaries in red. **(d)** Grid overlay on chosen states.

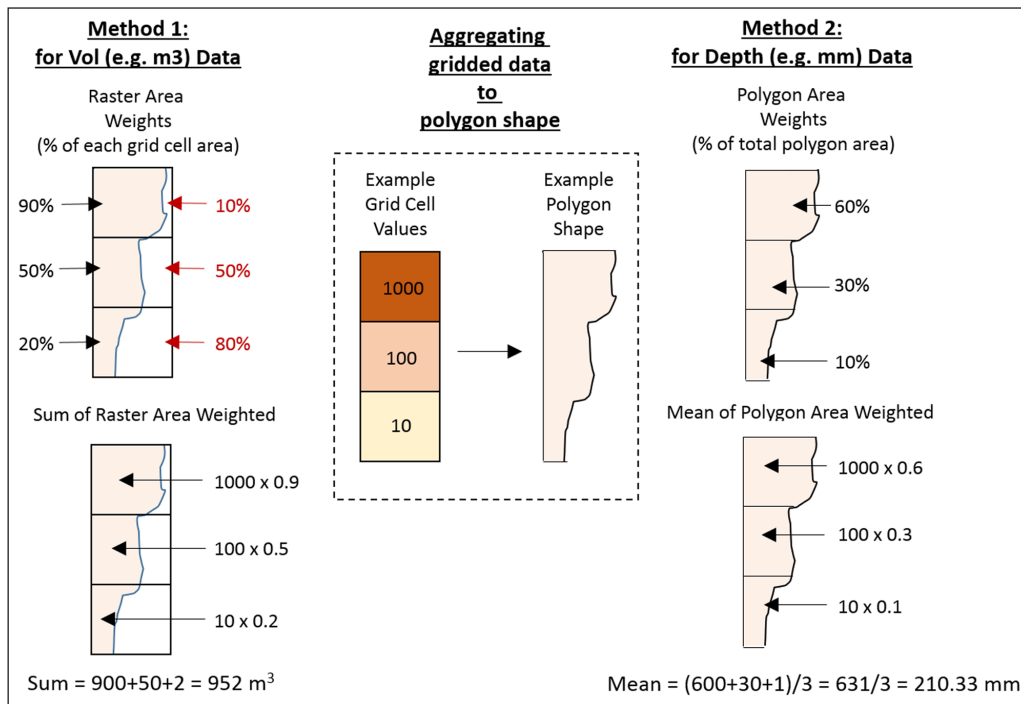


Figure 6: metis.grid2poly.R conceptual methodology showing two methods of aggregating grid cell values to overlapping polygons. Method 1 uses the sum of partial grid cell values weighted by the grid cell area overlapping with the polygon when the data is in the form of volume (example rainfall in km³). Method 2 uses the mean of partial grid cell values weighted by the area of overlapping shape as a ratio of the total polygon area when the data is in the form of depth (example rainfall in mm or water scarcity as a ratio).

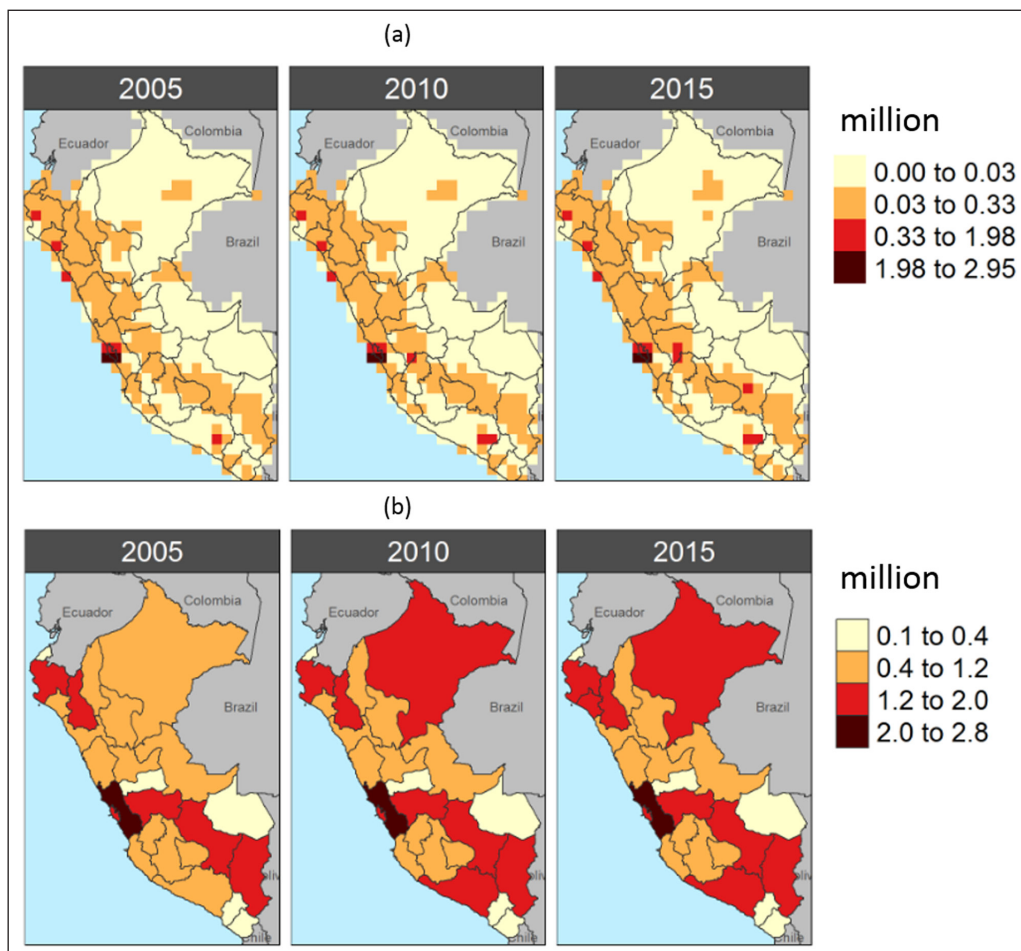


Figure 7: metis.mapsProcess.R example outputs from the example script metis.master.R. **(a)** Gridded hypothetical data for 2005, 2010 and 2015 in Peru. **(b)** Data aggregated by polygon for 2005, 2010 and 2015 in Peru.

or sector-specific models could easily write similar functions to post-process outputs from other models into the standardized templates presented above (Tables 2, 3 and 4).

Quality control

`metis.master.R` in Metis' home directory provides unit, integrated, and functional testing. The script allows users to run and test each individual function described briefly in this paper independently. Example data is provided with the installation of Metis so users can run the examples without creating their own data. Expected results for each function are posted on the webpage <https://github.com/JGCRI/metis>. The functions can also interact with outputs from each other and thus the entire script (`metis.master.R`) can be sourced as a functional test. At the end of `metis.master.R` a section on testing checks if the expected output was produced for each of the sections presented. A final line at the end of the script gives a summary of these test results.

(2) Availability

Operating system

Linux, Mac OSX, Windows 7 and up

Programming language

R Version 3.1.5 and up

Additional system requirements

NA

Dependencies

*Note: packages marked with * may have additional requirements to be installed correctly on different operating systems. These are described in the detailed installation instructions in the `metis.master.R` file and include the packages `devtools`, `rgdal`, `magick`, and `rgcam`.*

1. raster (>= 2.7.15)
2. RColorBrewer (>= 1.1.2)
3. rgcam* (>= 0.5.0)
4. tibble (>= 1.4.2)
5. ggalluvial (>= 0.9.1)
6. dplyr (>= 0.7.7)
7. tmap (>= 2.1.1)
8. ggplot2 (>= 3.1.0)
9. scales (>= 0.5.0)
10. utils (>= 3.5.0)
11. tidyr (>= 0.8.1)
12. rlang (>= 0.3.0)
13. grDevices (>= 3.5.0)
14. processx (>= 3.2.0)
15. rgdal* (>= 1.2.20)
16. magrittr (>= 1.5)
17. sp (>= 1.2.7)
18. methods (>= 3.5.0)
19. tidyselect (>= 0.2.5)
20. rgeos (>= 0.3.26)
21. zoo (>= 1.8.4)
22. stats (>= 3.5.0)

23. dbplyr (>= 1.3.0)
24. RSQLite (>= 2.1.1)
25. ggrepel (>= 0.8.1)
26. data.table
27. stringr (>= 1.3.1)
28. magick* (>= 2.1)
29. DBI

List of contributors

All contributors were listed as authors with corresponding roles and affiliations.

Software location

Archive

Name: Zenodo

Persistent identifier: 10.5281/zenodo.3367767

Licence: BSD2-Clause

Publisher: Zarrar Khan

Version published: v1.0.0

Date published: 14/08/19

Code repository

Name: GitHub

Identifier: <https://github.com/JGCRI/metis>

Licence: BSD2-Clause

Date published: 14/08/19

Language

R

(3) Reuse potential

`metis.master.R` in Metis' home directory provides users with detailed examples to test each key Metis function independently. The examples are illustrative and can be easily modified and adapted for different user needs. The model is hosted on GitHub and under active development with active support from the developers to address any bugs or issues that may arise.

Competing Interests

The authors have no competing interests to declare.

References

1. **Scanlon, B R**, et al. 2017 The food-energy-water nexus: Transforming science for society. *Water Resources Research*, 53(5): 3550–3556. DOI: <https://doi.org/10.1002/2017WR020889>
2. **White, D, Jones, J, Maciejewski, R, Aggarwal, R and Mascaro, G** 2017 Stakeholder analysis for the food-energy-water nexus in phoenix, Arizona: Implications for nexus governance. *Sustainability*, 9(12): 2204. DOI: <https://doi.org/10.3390/su9122204>
3. **Scott, C A, Kurian, M and Wescoat, J L** 2015 The Water-Energy-Food Nexus: Enhancing Adaptive Capacity to Complex Global Challenges. In: *Governing the Nexus*, Kurian, M and Ardakanian, R (eds.), 15–38. Cham: Springer International Publishing. [Online]. Available: http://link.springer.com/10.1007/978-3-319-05747-7_2. [Accessed: 18-Dec-2019]. DOI: https://doi.org/10.1007/978-3-319-05747-7_2

4. **Liu, J**, et al. Sep. 2018 Nexus approaches to global sustainable development. *Nature Sustainability*, 1(9): 466–476. DOI: <https://doi.org/10.1038/s41893-018-0135-8>
5. **Hibbard, K A** and **Janetos, A C** 2013 The regional nature of global challenges: A need and strategy for integrated regional modeling. *Climatic Change*, 118(3–4): 565–577. DOI: <https://doi.org/10.1007/s10584-012-0674-3>
6. **Rice, J S**, **Moss, R H**, **Runci, P J**, **Anderson, K L** and **Malone, E L** 2012 Incorporating stakeholder decision support needs into an integrated regional Earth system model. *Mitigation and adaptation strategies for global change*, 17(7): 805–819. DOI: <https://doi.org/10.1007/s11027-011-9345-3>
7. **Leung, R**, **Collins, B** and **Famiglietti, J** 2012 Community Modeling and Long-Term Predictions of the Integrated Water Cycle. U.S. Department of Energy, Office of Science [Online]. Available: https://climatemodeling.science.energy.gov/sites/default/files/Water_Cycle_Report_LR.pdf.
8. **Blanc, E**, et al. *Modeling US water resources under climate change*, *Earth's Future*, 2: 197–224. Received, 2013. DOI: <https://doi.org/10.1002/2013EF000214>
9. **Hejazi, M I**, et al. 2014 Integrated assessment of global water scarcity over the 21st century under multiple climate change mitigation policies. *Hydrology and Earth System Sciences*, 18(8): 2859–2883. DOI: <https://doi.org/10.5194/hess-18-2859-2014>
10. **Hejazi, M**, et al. 2014 Long-term global water projections using six socioeconomic scenarios in an integrated assessment modeling framework. *Technological Forecasting and Social Change*, 81: 205–226. DOI: <https://doi.org/10.1016/j.techfore.2013.05.006>
11. **Schlosser, C A**, et al. 2014 The future of global water stress: An integrated assessment. *Earth's Future*, 2(8): 341–361. DOI: <https://doi.org/10.1002/2014EF000238>
12. **Chaturvedi, V**, et al. 2015 Climate mitigation policy implications for global irrigation water demand. *Mitigation and adaptation strategies for global change*, 20(3): 389–407. DOI: <https://doi.org/10.1007/s11027-013-9497-4>
13. **Kim, S H**, et al. 2016 Balancing global water availability and use at basin scale in an integrated assessment model. *Climatic Change*, 136(2): 217–231. DOI: <https://doi.org/10.1007/s10584-016-1604-6>
14. **Vinca, A**, et al. Jul. 2019 The Nexus Solutions Tool (NEST): An open platform for optimizing multi-scale energy-water-land system transformations. *Geoscientific Model Development Discussions*, 1–33. DOI: <https://doi.org/10.5194/gmd-2019-134>
15. **Kraucunas, I**, et al. 2015 Investigating the nexus of climate, energy, water, and land at decision-relevant scales: The Platform for Regional Integrated Modeling and Analysis (PRIMA). *Climatic Change*, 129(3–4): 573–588. DOI: <https://doi.org/10.1007/s10584-014-1064-9>
16. **Miller, R E** and **Blair, P D** 2009 *Input–Output Analysis: Foundations and Extensions*, 2nd ed. Cambridge: Cambridge University Press. [Online]. Available: <http://ebooks.cambridge.org/ref/id/CBO9780511626982>. [Accessed: 28-Jul-2019]. DOI: <https://doi.org/10.1017/CBO9780511626982>
17. **Calvin, K**, et al. Feb. 2019 GCAM v5.1: Representing the linkages between energy, water, land, climate, and economic systems. *Geoscientific Model Development*, 12(2): 677–698. DOI: <https://doi.org/10.5194/gmd-12-677-2019>
18. **Li, X**, et al. Sep. 2017 Xanthos – A Global Hydrologic Model. *Journal of Open Research Software*, 5 [Online]. Available: <http://openresearchsoftware.metajnl.com/articles/10.5334/jors.181/>. [Accessed: 26-Jul-2019]. DOI: <https://doi.org/10.5334/jors.181>
19. **Le Page, Y**, **West, T O**, **Link, R** and **Patel, P** Sep. 2016 Downscaling land use and land cover from the Global Change Assessment Model for coupling with Earth system models. *Geoscientific Model Development*, 9(9): 3055–3069. DOI: <https://doi.org/10.5194/gmd-9-3055-2016>
20. **Li, X**, et al. Feb. 2018 Tethys – A Python Package for Spatial and Temporal Downscaling of Global Water Withdrawals. *Journal of Open Research Software*, 6 [Online]. Available: <http://openresearchsoftware.metajnl.com/articles/10.5334/jors.197/>. [Accessed: 26-Jul-2019]. DOI: <https://doi.org/10.5334/jors.197>
21. **Natural Earth**. Downloads | Natural Earth. *Natural Earth* [Online]. Available: <https://www.naturalearthdata.com/downloads/>. [Accessed: 31-Jul-2019].

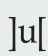
How to cite this article: Khan, Z, Wild, T, Vernon, C, Miller, A, Hejazi, M, Clarke, L, Miralles-Wilhelm, F, Castillo, R M, Moreda, F, Bereslawski, J L, Suriano, M and Casado, J 2020 Metis – A Tool to Harmonize and Analyze Multi-Sectoral Data and Linkages at Variable Spatial Scales. *Journal of Open Research Software*, 8: 10. DOI: <https://doi.org/10.5334/jors.292>

Submitted: 14 August 2019

Accepted: 06 March 2020

Published: 30 March 2020

Copyright: © 2020 The Author(s). This is an open-access article distributed under the terms of the Creative Commons Attribution 4.0 International License (CC-BY 4.0), which permits unrestricted use, distribution, and reproduction in any medium, provided the original author and source are credited. See <http://creativecommons.org/licenses/by/4.0/>.

 *Journal of Open Research Software* is a peer-reviewed open access journal published by Ubiquity Press.

OPEN ACCESS 